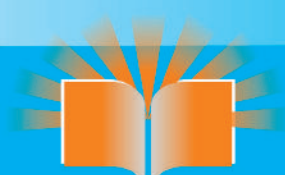


Val II, Issue:VIII, Sept 2012

ISSN : 2230-7850

Indian Streams Research Journal



Monthly Multidisciplinary Research Journal



Executive Editor
Ashok Yakkaldevi

Editor-in-Chief
H.N. Jagtap

Welcome to ISRJ

RNI MAHMUL/2011/38595

ISSN No.2230-7850

Indian Streams Research Journal is a multidisciplinary research journal, published monthly in English, Hindi & Marathi Language. All research papers submitted to the journal will be double - blind peer reviewed referred by members of the editorial Board readers will include investigator in universities, research institutes government and industry with research interest in the general subjects.

International Advisory Board

Flávio de São Pedro Filho Federal University of Rondonia, Brazil	Mohammad Hailat Dept. of Mathmatical Sciences, University of South Carolina Aiken, Aiken SC 29801	Hasan Baktir English Language and Literature Department, Kayseri
Kamani Perera Regional Centre For Strategic Studies, Sri Lanka	Abdullah Sabbagh Engineering Studies, Sydney	Ghayoor Abbas Chotana Department of Chemistry, Lahore University of Management Sciences [PK]
Janaki Sinnasamy Librarian, University of Malaya [Malaysia]	Catalina Neculai University of Coventry, UK	Anna Maria Constantinovici AL. I. Cuza University, Romania
Romona Mihaila Spiru Haret University, Romania	Ecaterina Patrascu Spiru Haret University, Bucharest	Horia Patrascu Spiru Haret University, Bucharest, Romania
Delia Serbescu Spiru Haret University, Bucharest, Romania	Loredana Bosca Spiru Haret University, Romania	Ilie Pintea, Spiru Haret University, Romania
Anurag Misra DBS College, Kanpur	Fabricio Moraes de Almeida Federal University of Rondonia, Brazil	Xiaohua Yang PhD, USA
Titus Pop	George - Calin SERITAN Postdoctoral Researcher	Nawab Ali Khan College of Business Administration

Editorial Board

Pratap Vyamktrao Naikwade ASP College Devrukh,Ratnagiri,MS India	Iresh Swami Ex - VC. Solapur University, Solapur	Rajendra Shendge Director, B.C.U.D. Solapur University, Solapur
R. R. Patil Head Geology Department Solapur University, Solapur	N.S. Dhaygude Ex. Prin. Dayanand College, Solapur	R. R. Yalikar Director Managment Institute, Solapur
Rama Bhosale Prin. and Jt. Director Higher Education, Panvel	Narendra Kadu Jt. Director Higher Education, Pune	Umesh Rajderkar Head Humanities & Social Science YCMOU, Nashik
Salve R. N. Department of Sociology, Shivaji University, Kolhapur	K. M. Bhandarkar Praful Patel College of Education, Gondia	S. R. Pandya Head Education Dept. Mumbai University, Mumbai
Govind P. Shinde Bharati Vidyapeeth School of Distance Education Center, Navi Mumbai	Sonal Singh Vikram University, Ujjain	Alka Darshan Shrivastava Shaskiya Snatkottar Mahavidyalaya, Dhar
Chakane Sanjay Dnyaneshwar Arts, Science & Commerce College, Indapur, Pune	G. P. Patankar S. D. M. Degree College, Honavar, Karnataka	Rahul Shriram Sudke Devi Ahilya Vishwavidyalaya, Indore
Awadhesh Kumar Shirotriya Secretary, Play India Play (Trust),Meerut	Maj. S. Bakhtiar Choudhary Director,Hyderabad AP India.	S.KANNAN Ph.D , Annamalai University,TN
	S.Parvathi Devi Ph.D.-University of Allahabad	Satish Kumar Kalhotra
	Sonal Singh	

Address:-Ashok Yakkaldevi 258/34, Raviwar Peth, Solapur - 413 005 Maharashtra, India
Cell : 9595 359 435, Ph No: 02172372010 Email: ayisrj@yahoo.in Website: www.isrj.net



An Overview Of Socio Economic Status Of Padmapuram Village Of Andhra Pradesh

Arindam Chattopadhyay

Guest Lecturer, Sripat Singh College,
Murshidabad, W.B
Email: arindam.chattopadhyay@yahoo.in

Abstract:

Socio economic development of an area is the best reflection of the quality of life of its people. The distribution of social and economic services is crucial not only for promoting economic growth but also for assuring the social justice and improving the quality of life. Growing disparities and social tensions in this area is associated with unequal and unplanned developmental programmes. Padmapuram is a village in Araku valley in Visakhapatnam district of Andhra Pradesh. It has been found in the study that there is a substantial gap between demand and supply of health care infrastructure, both physical and manpower.

Education plays a fundamental role in income generation and there are many other ways in which education helps to promote and sustain human development in this area. There is an urgent requirement of some developmental planning. The present paper attempts to find out the present status of social and economic development of Padmapuram is village in Araku valley.

INTRODUCTION

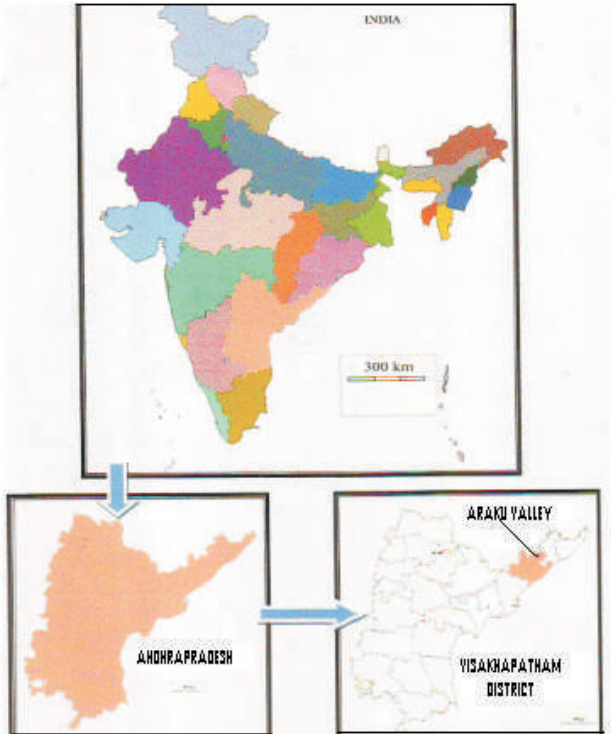
Socioeconomic status is an economic and sociological combined total measure of a person's work experience and of an individual's or family's economic and social position in relation to others, based on income, education, and occupation. When analyzing a family's socioeconomic status, the household income, earners' education, and occupation are examined, as well as combined income, versus with an individual, when their own attributes are assessed. Socioeconomic status is typically broken into three categories, high status, middle status, and low status to describe the three areas a family or an individual may fall into. When placing a family or individual into one of these categories any or all of the three variables (income, education, and occupation) can be assessed. A 4th variable, wealth, may also be examined when determining socioeconomic status. Additionally, low income and little education have shown to be strong predictors of a range of physical and mental health problems, ranging from respiratory viruses, arthritis, coronary disease, and schizophrenia. The paper attempts to find out the present socioeconomic status of Padmapuram village of Visakhapatnam of Andhra Pradesh.

LOCATION OF THE STUDY AREA

Padmapuram is village in Araku valley in Visakhapatnam district of Andhra Pradesh. Padmapuram is located 79.6 kilometer away from its district main city Visakhapatnam.

Please cite this Article as : Arindam Chattopadhyay , An Overview Of Socio Economic Status Of Padmapuram Village Of Andhra Pradesh : Indian Streams Research Journal (Sept. ; 2012)





OBJECTIVES

The main objectives are-

- (1)To study its present situation and dimension.
- (2)To analyze the cause and background of the problem.
- (3)To identify the possible strategies for human development.
- (4)To ensure proper planning and management measures.

DATA SOURCE

This work is based on primary data obtained from Questionnaire survey, interview, field visit and secondary data is obtained from Government and Non-Government office. Various maps and diagrams have been collected in order to fulfill the objective of the research. The collected data according to different categories helps to generalize or describe the demographic character as well as socio economic characteristics of the village.

DATABASE

Methodology for the present work is statistical as well as cartographic. For analyzing this data, various statistical techniques have been adopted to fulfill the objective. The paper represents the present scenario of social and economic development of Padmapuram village of Visakhapatnam of Andhra Pradesh.

Table: 1 showing the distribution of population of Padmapuram Village, A.P.

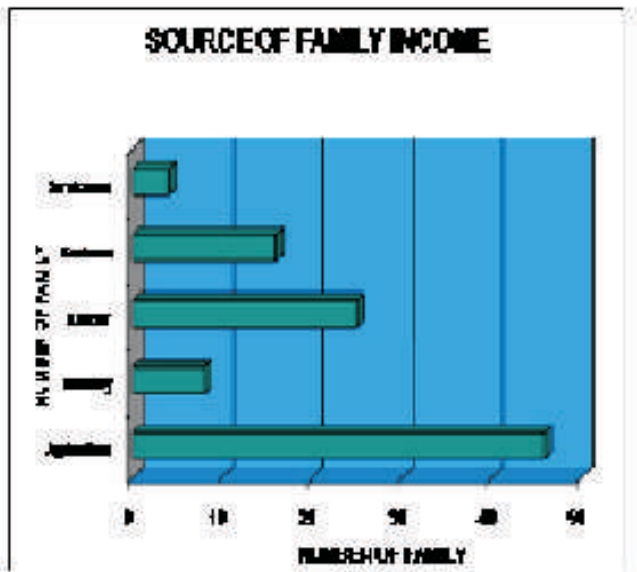
Sex Distribution	
Male	Female
261	236



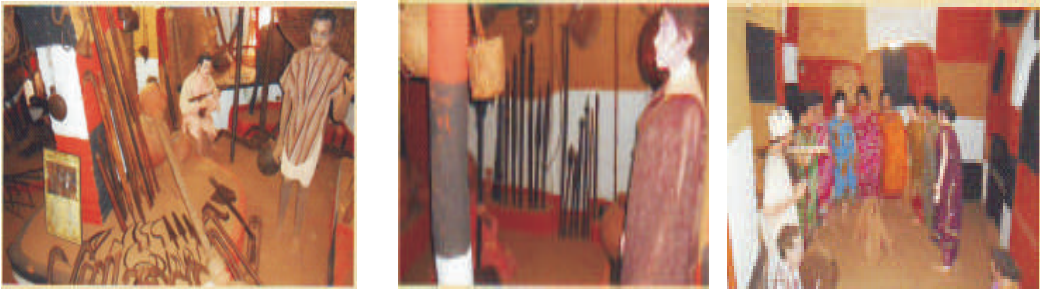


Literate	Illiterate
295	202

Indian Streams Research Journal • Volume 2 Issue 8 • Sept 2012



PEOPLE INVOLV E IN HANDICRAFT AND HANDLOOM INDUSTRIES



PEOPLE INVOLV E IN DIFFERENT ECONOMIC SECTO RS



MAJOR CONSTRAINS FOR DEVELOPMENT IN THIS AREA

Research reveals that there are a number of socio economic problems in this study area. The identified problems are stated below:

1.Local people of Padmapuram are suffering from scarcity of safe drinking water which causes different social issues.

- 2.Scarcity of irrigated water indicates low productivity and poor economic condition of the local people.
- 3.Social hazard due to out burst of different diseases.
- 4.The entire area of Padmapuram is an interior village where people have narrow and traditional thinking.
- 5.They are not so economically sound.

Tourism may change the socio economic condition of the local people of Padmapuram. The only reason behind the unwillingness is that people have alternative economic opportunities. They involve in agriculture, business and different private sectors. According to the local people tourist come to visit historical places only for a month so it creates seasonal unemployment. There are a number of tourist places, like Bora Cave, Simachalam etc.



BORA CAVE



SIMACHALAM

SUGGESTIONS

- 1.Better suggestion for the development of tourism industry in this area may be the social change and change in human perception and thinking. Approach from both Government and local people for the development of tourism industry may be an ideal step to regenerate the economic condition in the study area.
- 2.Development of communication, health, education can improve the socio economic status of the people of Padmapuram Village.
- 3.To mitigate the health related socio economic issues, establishment of a number of quality hospitals is required.
- 4.Investment is required from Government and private sectors to mobilize the entire developmental process.
- 5.The tribal communities in this region are now vulnerable. Because they are threatened by the tourists. Unknown foreign tourists are continuously damaging their myth, culture and tradition.

CONCLUSION

From the above discussion it is clear that the area is not so developed. The isolation in every sense is a cause of backwardness of this region. Employment opportunity in this village is very low due to poor educational background. The physical set up of this region is also a barrier for proper development. Proper planning and management is highly required in this area.

REFERENCES

- Singh, R.L., Regional Geography of India.
 Monkhouse, F.I. and Wilkinson, H.R., Maps and Diagram.
 Publication of Govt.Districts Census Hand Book, Andhrapradesh Government.

Publish Research Article

International Level Multidisciplinary Research Journal

For All Subjects

Dear Sir/Madam,

We invite original unpublished research paper. Summary of Research Project, Theses, Books and Books Review of publication, You will be pleased to know that our journals are..

Associated and Indexed, India

- OPEN J-GATE
- International Scientific Journal Consortium Scientific

Associated and Indexed, USA

- Google Scholar
- DOAJ
- EBSCO
- Index Copernicus
- Academic Journal Database
- Publication Index
- Scientific Resources Database
- Recent Science Index
- Scholar Journals Index
- Directory of Academic Resources
- Elite Scientific Journal Archive
- Current Index to Scholarly Journals
- Digital Journals Database
- Academic Paper Database
- Contemporary Research Index



Indian Streams Research Journal
258/34, Raviwar Peth Solapur-413005, Maharashtra
Contact: 9595359435
E-Mail: ayisrj@yahoo.in / ayisrj2011@gmail.com
Website: www.isrj.net