

Vol 4 Issue 1 Feb 2014

ISSN No : 2230-7850

International Multidisciplinary
Research Journal

*Indian Streams
Research Journal*

Executive Editor
Ashok Yakkaldevi

Editor-in-Chief
H.N.Jagtap

Welcome to ISRJ

RNI MAHMUL/2011/38595

ISSN No.2230-7850

Indian Streams Research Journal is a multidisciplinary research journal, published monthly in English, Hindi & Marathi Language. All research papers submitted to the journal will be double - blind peer reviewed referred by members of the editorial board. Readers will include investigator in universities, research institutes government and industry with research interest in the general subjects.

International Advisory Board

Flávio de São Pedro Filho Federal University of Rondonia, Brazil	Mohammad Hailat Dept. of Mathematical Sciences, University of South Carolina Aiken	Hasan Baktir English Language and Literature Department, Kayseri
Kamani Perera Regional Center For Strategic Studies, Sri Lanka	Abdullah Sabbagh Engineering Studies, Sydney	Ghayoor Abbas Chotana Dept of Chemistry, Lahore University of Management Sciences[PK]
Janaki Sinnasamy Librarian, University of Malaya	Catalina Neculai University of Coventry, UK	Anna Maria Constantinovici AL. I. Cuza University, Romania
Romona Mihaila Spiru Haret University, Romania	Ecaterina Patrascu Spiru Haret University, Bucharest	Horia Patrascu Spiru Haret University, Bucharest,Romania
Delia Serbescu Spiru Haret University, Bucharest, Romania	Loredana Bosca Spiru Haret University, Romania	Ilie Pintea, Spiru Haret University, Romania
Anurag Misra DBS College, Kanpur	Fabricio Moraes de Almeida Federal University of Rondonia, Brazil	Xiaohua Yang PhD, USA
Titus PopPhD, Partium Christian University, Oradea,Romania	George - Calin SERITAN Faculty of Philosophy and Socio-Political Sciences AL. I. Cuza University, IasiMore

Editorial Board

Pratap Vyamktrao Naikwade ASP College Devrukh,Ratnagiri,MS India Ex - VC. Solapur University, Solapur	Iresh Swami Ex - VC. Solapur University, Solapur	Rajendra Shendge Director, B.C.U.D. Solapur University, Solapur
R. R. Patil Head Geology Department Solapur University,Solapur	N.S. Dhaygude Ex. Prin. Dayanand College, Solapur	R. R. Yalikal Director Managment Institute, Solapur
Rama Bhosale Prin. and Jt. Director Higher Education, Panvel	Narendra Kadu Jt. Director Higher Education, Pune	Umesh Rajderkar Head Humanities & Social Science YCMOU,Nashik
Salve R. N. Department of Sociology, Shivaji University,Kolhapur	K. M. Bhandarkar Praful Patel College of Education, Gondia	S. R. Pandya Head Education Dept. Mumbai University, Mumbai
Govind P. Shinde Bharati Vidyapeeth School of Distance Education Center, Navi Mumbai	Sonal Singh Vikram University, Ujjain	Alka Darshan Shrivastava Shaskiya Snatkottar Mahavidyalaya, Dhar
Chakane Sanjay Dnyaneshwar Arts, Science & Commerce College, Indapur, Pune	G. P. Patankar S. D. M. Degree College, Honavar, Karnataka	Rahul Shriram Sudke Devi Ahilya Vishwavidyalaya, Indore
Awadhesh Kumar Shirotriya Secretary,Play India Play,Meerut(U.P.)	Maj. S. Bakhtiar Choudhary Director,Hyderabad AP India.	S.KANNAN Annamalai University,TN
	S.Parvathi Devi Ph.D.-University of Allahabad	Satish Kumar Kalhotra Maulana Azad National Urdu University
	Sonal Singh, Vikram University, Ujjain	

Address:-Ashok Yakkaldevi 258/34, Raviwar Peth, Solapur - 413 005 Maharashtra, India
Cell : 9595 359 435, Ph No: 02172372010 Email: ayisrj@yahoo.in Website: www.isrj.net



GROWTH OF BARIUM IODATE CRYSTAL BY GEL TECHNIQUES

Sonawane Mangala S.

S.P.H. Mahila college, malegoan camp

Abstract:-In this review paper shows that the growth and study of single crystal barium iodate by gel technique. In this work there were three month data collected is shows by the 15 days intervals. By this

supernatant. Crystals having different Morphologies were obtained such as Prismatic, needle shaped, transparent, opaque needle. The characterization also studied using IR spectroscopy

Keywords: Barium iodate crystal, gel method, crystal growth .

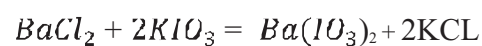
INTRODUCTION

The gel techniques today, resting on a sound footing providing an tool for studying th kinematics and mechanism of bulk crystallization, as affected by various parameters such as temp, gel PH, gel density, gel aging, nature, purity, concentration of reactants and type of crystallization apparatus.

As the regard the mechanism by which crystals growth in the gels there have been evidence for two dimensional, spreading and pilling of growth layer taking place from one or more initiation centre. It can prove that the super saturation near the surface and homogeneous nucleation takes places.(Udea S.R. and Mullin J.M., Ba(IO₃)₂, equilibrium condition (Joshi and Trivedi 1983), reactants, concentration programming, effect of neutral gel, etc.

MATERIAL AND METHODS

For the growth and study of single crystal barium iodide, various apparatus are used for gelling process such as digital PH meter, Magnetic stirrer, test tubes, burettes, pipettes Beaker etc. Growth of barium iodide is achieve by reaction of two components i.e barium chloride and potassium iodide.



For the preparation of gel – acid was taken in a beaker, to sodium matasilicate solution is added drop by drop with continues stirrer still PH is 4.2 . Then barium chloride is added with continuous stirrer. Then solution take place in test tube covered with cotton plug. The gel setting time is 15 day depending upon PH.

Potassium iodide (KIO) was used as feed the solution. Its different concentration varying from 0.2 to 0.4 were added over set gels.

RESULT AND DISCUSSION

The parameter which controls the nucleation and growth of single crystal are found to be

- a)pH of gel : Gel of different pH valve ranging 4 to 4.2 are recorded in table no.1. Higher pH values shows that proper crystal and deduce the number of nucleation. As the pH values are increase above 4.7 then gel set immediately which is leading to uncontrolled number nuclei and formation of too many microcrystals.
- b)Concentration of supernatant -

0.2 M concentration (*KIO*) - less nucleation
0.4 M concentration(*KIO*) – greater nucleation and dendrites are observed0.4 M concentration(*KIO*)– Large number crystal are observed at top most surface and less number crystal are observed at bottom.

- a)Temperature: It is observed that habit of crystal modified due to the growth of temperature. But crystal growth at room temperature 22 to 30 °C
- b)Effect of gel aging: To obtain the better quality of crystal and to reduced diffusion rate, gel aging is essential.
- c)Optimum condition : The condition are follows

2 N Acetic acid : 4CC

Density of sodium metasilicate solution: 1.04 gm/CC
Concentration of sodium Chloride solution: 0.4 M
pH of the mixture : 4.2
Temperature: 25 °C
Gel aging and setting Time 15 day

Observation:

Tables 1 summarize the effects
concentration of supernatant on quantity and type of barium iodide crystal. Figure 1 iodide.

Table No.1 Effect of concentration of gel and supernatant on quantity of crystal

T.T. No	Na ₂ SiO ₃ (ml)	Acetic acid	pH	KIO ₃ (ml)	BaCl ₂ (ml)	Description of crystal
1	4.4	4	10.5	0.2	5	No crystal
2	15	4.5	2.5	1.4	5	No crystal
3	15.5	5	2.5	0.4	5	No crystal
4	5	5	8.7	1	5	No crystal
5	4.5	4	5.24	2	5	3 needle 2 prismatic crystal
6	4	4	10.1	2	5	No crystal
7	4	4	11.1	2	5	No crystal
8	4	4	8.4	1.2	5	No crystal
9	4.5	4	4.6	1.5	5	No crystal
10	4.5	4	4.4	1	5	2 trans. prismatic crystal
11	3.1	4	4.9	1.2	5	No crystal
12	5	4	4.2	1.5	5	No crystal
13	6	4	4.2	2.5	5	No crystal
14	5	4	4.49	2	5	2 Needle prismatic crystal
15	5	4	6.7	1.5	5	No crystal
16	4.5	5	4.1	2	5	1 needle crystal
17	5	4	4.2	1	5	3 needle crystal
18	3.5	4	4.4	1.5	5	9 opaque needle crystal
19	4	4	4.04	1.5	5	1 needle crystal
20	3.5	4	4.2	1	5	Needle 7 prismatic crystal
21	4.5	4	4.2	1.5	5	2 needle crystal
22	4.5	4	4.1	1.5	5	1 needle crystal
23	4.5	4	4.2	1.5	5	1 needle crystal

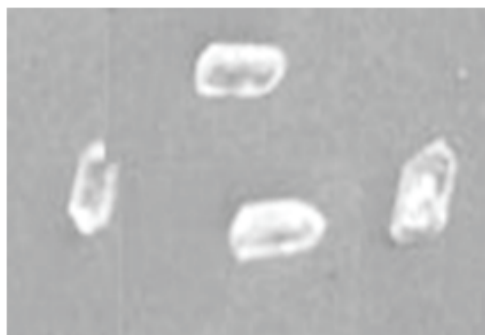


Figure 1. Prismatic transparent crystals of barium iodide

Characterization:

spectra were obtained on Fourier Transform Infra
Red spectroscopy (FT-IR) at SVPM's College of Pharmacy, Malegaon
Table No.2 show that of barium iodide Figures 2

The bands at 3000 1/cm are due to O–H stretching and at 1568 1/cm are due to H–O–H bending. Bands due to vibrations involving metal and iodine atoms are found near 582–802 1/cm. iodide iodide group of grown crystals.

Table No.2 Infrared (FT-IR) spectral analysis of barium iodide

No.	Peak	Intensity	Corr. Intensity	Base (H)	Base (L)	Area	Corr. Area
1	655.82	73.558	8.343	694.4	632.67	6.216	0.908
2	771.55	69.32	5.075	794.7	756.12	5.46	0.53
3	802.41	72.377	3.848	871.85	794.7	7.416	0.176
4	933.58	77.712	3.632	941.29	871.85	5.505	0.076
5	979.87	77.675	2.154	1003.02	941.29	6.36	0.379
6	1095.6	64.116	17.27	1303.92	1003.02	43.464	18.51
7	1419.66	66.443	14.705	1473.66	1357.93	14.422	3.988
8	1558.54	63.09	2.272	1566.25	1550.82	2.968	0.119
9	2360.95	79.517	6.249	2391.81	2345.52	3.336	0.463
10	3425.69	71.609	0.208	3433.41	3417.98	2.228	0.01



Fig.2 IR spectra of barium iodide

CONCLUSION:

Gel growth technique is suitable for growing crystals of barium iodate
Quantity of crystal are obtaining by changing the Concentration of supernatant, Temperature, gel aging.
FT –IR spectra are confirms the iodide group of grown crystals

REFERENCES

1. Armington A F and O'Connar J J 1968 J. Cryst. Growth 3/4 367
2. Blank Z 1973 J. Cryst. Growth 18 281
3. Joshi M S and Trivedi S G 1983 Indian J. Pure & Appl. Phys. 21 435
4. Shitole S.J. and Saraf K.B 2001 Growth and study of some gel grown group II single crystals of iodate - Indian Academy of Sciences.
5. Udea S.R. and Mullin J.M "Crystal Growth and characterization" North Holland Pub. Co.

Publish Research Article International Level Multidisciplinary Research Journal For All Subjects

Dear Sir/Mam,

We invite unpublished Research Paper, Summary of Research Project, Theses, Books and Book Review for publication, you will be pleased to know that our journals are

Associated and Indexed, India

- ✍ International Scientific Journal Consortium
- ✍ OPEN J-GATE

Associated and Indexed, USA

- ✍ Google Scholar
- ✍ EBSCO
- ✍ DOAJ
- ✍ Index Copernicus
- ✍ Publication Index
- ✍ Academic Journal Database
- ✍ Contemporary Research Index
- ✍ Academic Paper Database
- ✍ Digital Journals Database
- ✍ Current Index to Scholarly Journals
- ✍ Elite Scientific Journal Archive
- ✍ Directory Of Academic Resources
- ✍ Scholar Journal Index
- ✍ Recent Science Index
- ✍ Scientific Resources Database
- ✍ Directory Of Research Journal Indexing

Indian Streams Research Journal
258/34 Raviwar Peth Solapur-413005, Maharashtra
Contact-9595359435
E-Mail-ayisrj@yahoo.in/ayisrj2011@gmail.com
Website : www.isrj.net